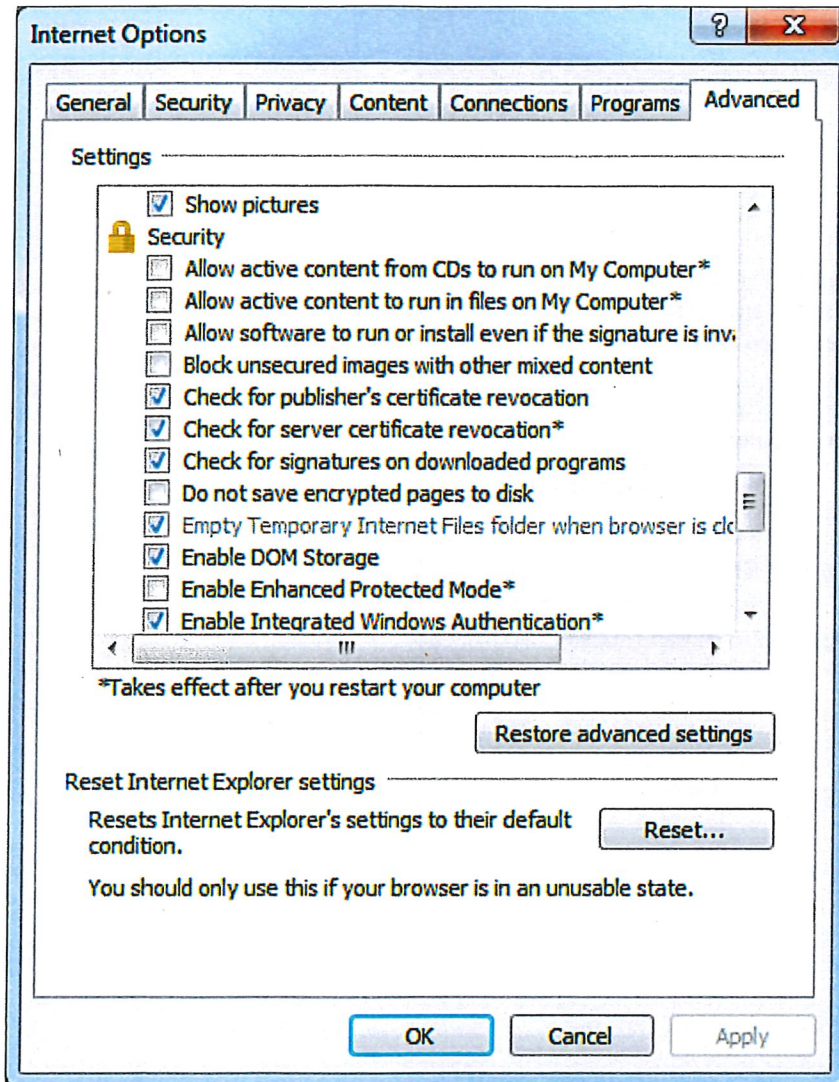


How to Enable Transport Layer Security (TLS) 1.2

1. From your internet browser, select **Tools**, then **Internet Options**.
2. Click the **Advanced Tab**, and scroll down to Security section.



3. Ensure TLS 1.2 is checked, if not check **TLS 1.2** and select, **Apply, OK**.

Internet Options



- General
- Security
- Privacy
- Content
- Connections
- Programs
- Advanced

Settings

- Enable Integrated Windows Authentication*
- Enable native XMLHTTP support
- Enable SmartScreen Filter
- Enable Strict P3P Validation*
- Send Do Not Track requests to sites you visit in Internet E
- Use SSL 2.0
- Use SSL 3.0
- Use TLS 1.0
- Use TLS 1.1
- Use TLS 1.2
- Warn about certificate address mismatch*
- Warn if changing between secure and not secure mode
- Warn if POST submittal is redirected to a zone that does n

*Takes effect after you restart your computer

Restore advanced settings

Reset Internet Explorer settings

Resets Internet Explorer's settings to their default condition.

Reset...

You should only use this if your browser is in an unusable state.

- OK
- Cancel
- Apply